

# ID Chair Concept

Antonio Citterio, 2010/2021

bof<sup>®</sup>

vitra.



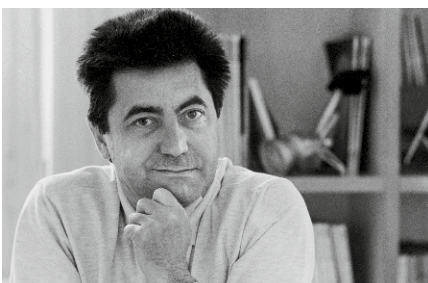
The ID Chair Concept offers countless customisation options to suit individual users. Different variations of the FlowMotion mechanism, a selection of backrests, armrests, seats and bases, along with a broad array of colours and fabrics, enable every user and company to find the perfect ID Chair – whether for an open-plan setting, individual or team offices, conference areas or management offices.

Despite the many possible variations, it always remains essentially the same chair in look and construction, with benefits for companies in terms of aesthetics, maintenance and service – and some models are 100% recyclable.

A study by the Institute for Biomechanics at ETH Zurich – one of the most renowned universities worldwide – showed that the ID Chair's range of movement is fully utilised. EMG measurements (electromyography) confirmed that intuitive use of the weight-dependent forward tilt mechanism activates core muscles in the abdomen and back. This boosts the metabolism and stabilises the lumbar column. MRI/MRT measurements (magnetic resonance imaging) proved that the forward tilt function triggers movement in all segments of the lower spine. This relieves pressure and enhances the diffusion of nutrients to the intervertebral discs. These dynamic sitting features actively prevent health problems.

The pleasantly soft seat options, the multi-adjustable armrests and the supportive backrests provide a high degree of comfort. Thanks to its new PU-foam-free Formfit F seat, the ID Chair is now even more sustainable. With a cushion manufactured from 100% recyclable polyester fibres – also used in mattresses – the highly breathable seat of this task chair is the first of its kind and allows customers to create configurations of the ID Chair that are 100% recyclable.

The ID Chair Concept consists of the models ID Cloud, ID Air, ID Mesh, ID Soft, ID Soft L, ID Trim and ID Trim L, each with a different backrest.



## Antonio Citterio

The architect and designer Antonio Citterio, who lives and works in Milan, has collaborated with Vitra since 1988. Together they have produced a series of office chairs and various office systems, as well as products for the Vitra Home Collection. The Citterio Collection is constantly being expanded.

1	ID Chair Concept	14-16	FlowMotion mechanism	32-33	ID Mesh
2-3	New model	17-18	Armrests and seat upholstery	34-35	ID Soft
4-5	Monochrome appearance	19-24	Cover fabrics	36-37	ID Soft L
6-7	ID Visitor	25-27	Sustainable quality	38-39	ID Trim
8-13	ID Chair, backrest	28-29	ID Cloud	40-41	ID Trim L
		30-31	ID Air		

ID CLOUD



A novel sitting experience: the combination of an ergonomic shell and a breathable membrane adapts to the shape of the back and flexibly follows its motions. This offers users of any height or weight exceptional freedom of movement.

---

**NEW FORMFIT F SEAT**



In addition to the existing seat versions – standard seat and contour seat with cushions made of polyurethane foam – there is a new variant with a breathable upholstery padding made of PU-free material: Formfit F seat. Several models of the ID Chair group are therefore 100% recyclable.

---

**NEW ARMRESTS**



The new armrests are comfortable and have a contemporary design. And because they are PU-foam-free, certain models of the ID Chair are 100% recyclable.

---

**Monochrome colour palette in soft grey**

In addition to the classic version of the base and armrests in chrome, the ID Chair Concept is now available in two new colour variants: soft grey and basic dark. The soft grey hue gives the chair a decidedly non-technical appearance, and combined with light-coloured fabric or leathers has a friendly inviting look. In these light-coloured monochrome palettes, the ID Chair is also ideal for the home office.

---

**Ring armrests in soft grey****Mechanism and base in soft grey**

---



**Monochrome palette in basic dark**

The armrests and bases for the second new colour variant are in black. In combination with dark fabrics or leathers from the Vitra Colour & Material Library, the monochrome ID Chairs acquire a striking emblematic appearance.

---



Ring armrests in basic dark



Mechanism and base in basic dark

---



ID Visitor is a comfortable touchdown chair designed by Antonio Citterio in collaboration with Vitra, perfectly coordinated with the ID Chair Concept. Thanks to its understated functional design, ID Visitor can be combined with almost any office chair and integrated in a wide variety of work environments.

The backrest can be selected from a choice of four versions to match those of the other ID Chairs. The base follows the same construction as the legendary Visavis visitor chair from Vitra, but the new backrests and powder-coated materials give it fresh contemporary appearance.



ID Visitor Air with ID Air



ID Visitor Soft with ID Soft L



ID Visitor Trim with ID Trim



ID Visitor Mesh with ID Mesh



The seat cushion and upholstered backrest versions are also available with PU-foam-free padding, which is 100% recyclable. This upholstery padding – manufactured using a brand-new technology – adapts to the shape of the user and offers excellent comfort.

With a broad selection of fabrics and colours, it is easy to find the perfect ID Visitor chair for every office environment.



ID Visitor Air with ID Air



ID Visitor Soft with ID Soft L



ID Visitor Trim with ID Trim



ID Visitor Mesh with ID Mesh



Components of the modular ID Chair system

The ID Chair Concept offers countless customisation options to suit individual users. Choices between the precisely adjustable FlowMotion mechanism, various types of backrests, bases and armrests as well as many different colours and upholstery covers make it possible for every individual user and every company to find their 'own' ID Chair. Despite the many

possible combinations, it always remains essentially the same chair – bringing advantages both in terms of acquisition and maintenance.

The office swivel chair range is made up of many components to satisfy a wide spectrum of requirements with respect to aesthetics, materials, purpose and price. Choosing the right ID Chair begins with the following selection of basic models:

**ID Air** with perforated plastic backrest

**ID Mesh** with padded mesh backrest

**ID Soft** with classic upholstered backrest

**ID Soft L** with high upholstered backrest

**ID Trim** with narrow backrest

**ID Trim L** with high backrest





#### Backrest construction

The membrane (right, light colour) follows the curves of the user's back, while the substructure (right, black, in background) provides the necessary support in the different zones of the upper body. The comfortable cover fabric (left) is breathable.

#### The ID Cloud backrest

The combination of an ergonomic shell and a breathable membrane adapts to the shape of the back and flexibly follows its movements.



#### Design features

The backrest is adjustable in height, and its curved upper edge together with the new Duo Knit cover – specially designed for ID Cloud – give the chair a particularly home-like appeal.



The fully upholstered backrest of ID Soft and ID Soft L ensures a high level of comfort, while its clean lines and reductive forms lend the chair an understated presence. ID Soft therefore blends in perfectly with diverse architectural environments. The backrest is height-adjustable and provides excellent support for the upper shoulder region. The support in the lumbar zone can be precisely adjusted to prevent the pelvis from tilting backwards.



#### ID Soft Stripes

Striped Knit is a form-fitted knit fabric for the backrest of ID Soft. Its textured surface and striped pattern add a fresh home-like accent to any environment. Striped Knit exists in a choice of two colour versions: red and blue.



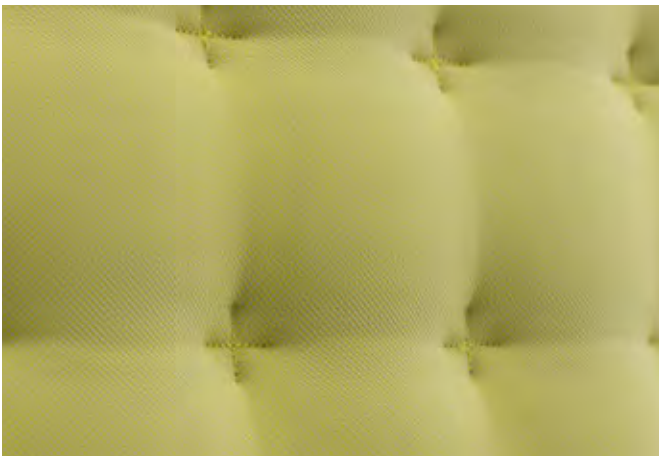


ID Trim conveys a sense of classic elegance and quality craftsmanship.

The self-supporting backrest construction consists of a fabric or leather cover stretched across the frame.

The interplay of the polyamide frame with the multi-chamber padding gives the backrest its three-dimensional range of movement. It adapts to the contours of the sitter's body and distributes varying degrees of flexibility and support to the correct zones (3-zone comfort).

1. Support in the lumbar zone: integrated lumbar cushion with optional height adjustment for effective support of the lower back. The lumbar cushion transitions smoothly into the flexible middle zone.
2. Flexibility in the thoracic zone: relieves strain in the muscles and spinal discs and maintains the head and shoulders in an upright position.
3. Support in the shoulder zone: keeps the neck from hyperextending so the neck muscles stay relaxed. The neck region remains in its natural position, which helps to prevent tension and strain.



The multi-chamber padding creates an upholstered effect with comfortable support, and the stitching gives ID Trim its characteristic quilted appearance.



The height-adjustable leather headrest on ID Trim L adds extra comfort. An optional clothes hanger is available as an accessory.

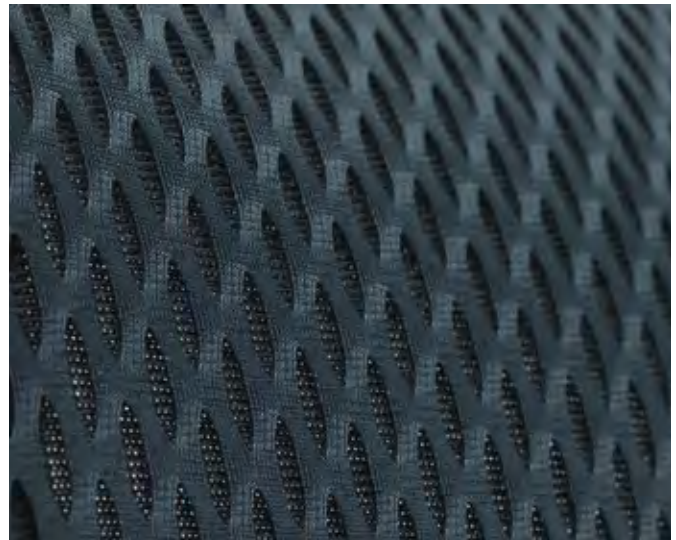


ID Mesh embodies technical transparency and lightness: fitted over a slender frame, the innovative spacer fabric has the translucent airiness of a net – yet it is as soft as a slim cushion. This structure not only provides a comfortable upholstered effect, but also ensures pleasant ventilation.

The backrest consists of just two plastic parts: the frame and the adjustable lumbar support. This construction provides support in the lumbar region and flexibility for the upper back. ID Mesh can be optionally equipped with a clothes hanger and a headrest.



Lumbar support for ID Mesh



The three-dimensional spacer fabric



ID Air represents simplicity in design without relinquishing comfort.

The one-piece plastic backrest of ID Air is manufactured in a patented process. The pattern of strategically placed perforations and the high-tech plastic material create firmer zones to provide support and more pliant zones to grant freedom of movement.

The flexibility of the backrest and effective air circulation are complemented by soft seat upholstery to ensure a high degree of comfort. Thanks to the easy-to-clean material, the backrest is also available in light colours, allowing high-contrast combinations with seat covers in a different shade.

## FLOWMOTION MECHANISM

**vitra.**

Human beings have a natural urge to move – even while seated. Ideally, an office swivel chair should not only offer freedom of movement but also encourage dynamic sitting habits. With this in mind, Vitra developed the FlowMotion mechanism.

This patented mechanical unit supports the sitter across the full range of movement - the first to do so not merely when the user leans back but also when the seat is tilted forward. Nearly all functions can be adjusted while sitting in the chair, and just a few quick turns of an adjustment screw enable precision tuning from minimum to maximum resistance. Even if the settings are not optimally adjusted on occasion, the chair still retains its ergonomic properties.

The functional features of the compact and robust FlowMotion mechanism come in three different combinations:

- with forward tilt, without seat depth adjustment
- without forward tilt, with seat depth adjustment
- without forward tilt and without seat depth adjustment



The harmonious range of motion enabled by the FlowMotion mechanism encourages the user to develop dynamic sitting habits. The adjustment options for the backrest resistance and the forward tilt function allow the user to assume any position between the maximally reclined lounging angle and the forward-tilted sitting posture, exploiting the full range of movement without physical exertion. The sitter enjoys unlimited freedom of movement but is supported by the chair at all times.

**Benefits of active sitting:**

- promotes spinal health by enhancing the supply of nutrients to vertebral discs.
- keeps the muscles supplied with oxygen, which helps to prevent tension and strain.
- activates circulation and supports inner organ function. This enhances the ability to concentrate and helps relieve physical tension and stress.



The FlowMotion mechanism offers forward tilt adjusted to the user's weight.



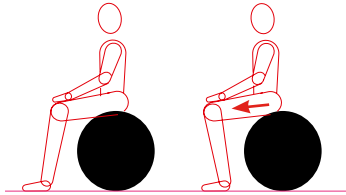
The ID Chair provides support in any position.



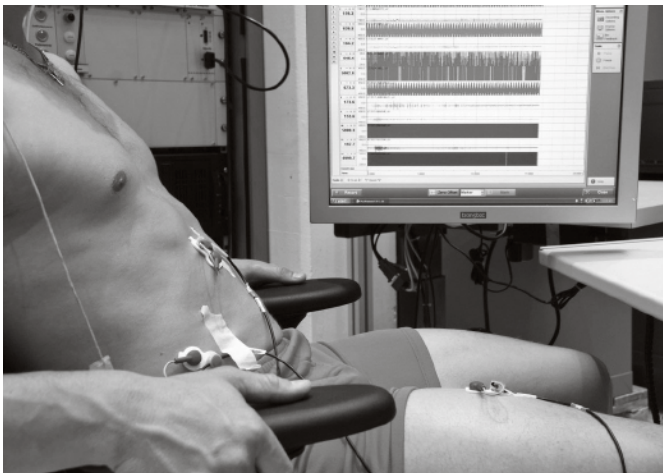
Movement activates the muscles and relieves pressure on the spinal discs.



A study conducted by the Institute for Biomechanics at the Swiss Federal Institute of Technology Zurich (ETH) demonstrated that the chair's range of movement is fully utilised. This is an indication that the chair enables dynamic sitting. The forward tilt function gives users the same kind of experience as sitting on an exercise ball.



EMG measurements have shown that using the weight-dependent forward tilt position increases muscle activity in the stomach and back, which stabilises the lumbar vertebrae.



**EMG (electromyography)**

MRI measurements have proven that the forward tilt function triggers movement in all segments of the lower spine. This relieves pressure and enhances diffusion of nutrients to the vertebral discs.

The active prevention of health problems can be reinforced by dynamic sitting, with the forward tilt position having an especially positive effect.

---



**Upright MRI, Zurich**





**3D ARMRESTS**

The 3D armrests feature adjustable height, width and depth and a 360° swivel function. The comfortable, soft armrest pads prevent pressure points from forming.



**2D ARMRESTS**

The 2D armrests are adjustable in height and width. The comfortable, soft armrest pads prevent pressure points from forming.



**FIXED RING ARMRESTS**

The fixed ring armrests in polished die-cast aluminium provide an elegant, minimalist solution for conference settings.



#### Formfit F seat

As part of its sustainable enhancement of existing products, Vitra has developed a seat cushion that is free of polyurethane foam. This breathable upholstery padding made of woven polyester fibres – manufactured using a brand-new technology – adapts to the shape of the user and offers a novel sitting experience. Combined with a textile cover and polyester lining, the cushion materials can be separated and are 100% recyclable.



#### STANDARD SEAT

The standard ID Chair seat is elegantly designed with a comfortably padded flat cushion, which also allows considerable lateral movement. The high-quality padded foam core ensures lasting comfort. The standard seat is available in the complete range of fabric and leather covers and can be combined with all chair mechanisms.

#### CONTOUR SEAT

The ID Chair's contour seat is a voluminous seat with a curved profile, which offers the sitter an immediate sense of exceptional comfort. Its contoured design provides support and stability. The contour seat is generously upholstered with high-quality foam padding and comes in the full range of fabric and leather covers designed for the ID Chair Concept. It can only be combined with chair mechanisms featuring seat depth adjustment.

## Diamond Mesh Home/Office

ID Mesh (backrest only)



Diamond Mesh is a technical spacer fabric with a three-dimensional honeycomb structure. The hollow cells in the hexagonal structure facilitate air circulation and ensure comfortable thermal conditions. These characteristics, combined with the technical, yet vibrant look of this robust knit, make it an excellent choice for office settings.

Diamond Mesh is available in 7 colours.

Material	100% polyester
Weight	600 g/m <sup>2</sup> (17.7 oz/y <sup>2</sup> )
Width	165 cm (64")
Abrasion resistance	45,000 Martindale
Fastness to light	Type 6
Pilling	Grade 4-5
Fastness to rubbing	Grade 4-5 dry and wet



**24**  
soft grey



**21**  
dim grey



**77**  
brick



**67**  
asphalt



**01**  
olive green



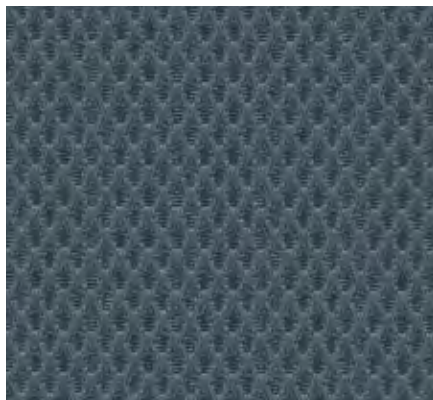
**66**  
nero



**02**  
smoke blue

## Silk Mesh Home/Office

ID Cloud (seat only), ID Air (seat only), ID Mesh, ID Soft, ID Soft L



Silk Mesh is a three-dimensional spacer fabric. Thanks to the air cells in the regular honeycomb structure, the fabric not only provides a comfortable cushioning effect but also ensures a pleasant seating climate. Silk Mesh is extremely robust and well suited for use in office environments.

Silk Mesh is available in 7 colours.

Material	100% polyester
Weight	300 g/m <sup>2</sup> (8.8 oz/y <sup>2</sup> )
Width	170 cm +/- 3 cm (67")
Abrasion resistance	40,000 / 100,000 Martindale (nero)
Fastness to light	Type 6
Pilling	Grade 4-5
Fastness to rubbing	Grade 4-5 dry and wet



**24**  
soft grey



**21**  
dim grey



**77**  
brick



**67**  
asphalt



**01**  
olive green



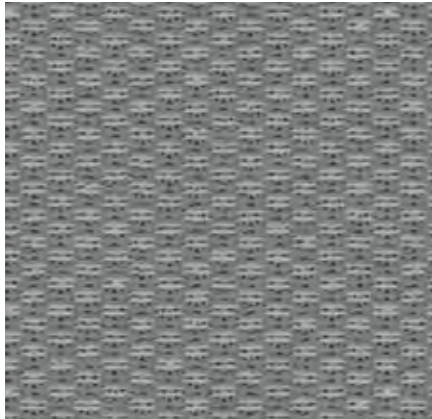
**66**  
nero



**02**  
smoke blue

# Duo Knit Home/Office

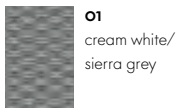
ID Cloud (backrest only)



Duo Knit is an elastic form-fitted knit fabric designed especially for the ID Cloud backrest. The lightly textured surface gives it an inviting high-quality appearance.

Duo Knit is available in 7 colours.

Material	4% spandex, 96% polyester
Weight	540 g/m <sup>2</sup> +/- 10%
Abrasion resistance	40,000 Martindale
Fastness to light	Type 6
Pilling	Grade 4-5
Fastness to rubbing	Grade 4-5 dry and wet



**01**  
cream white/  
sierra grey



**05**  
ink blue/  
turquoise



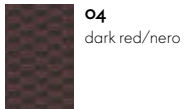
**03**  
petrol/  
nero



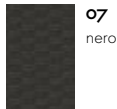
**06**  
brick/  
orange



**02**  
dark grey/  
nero



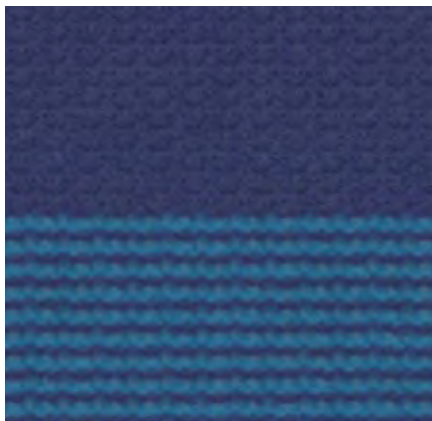
**04**  
dark red/  
nero



**07**  
nero

# Striped Knit Home/Office

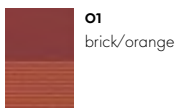
ID Soft (backrest only)



Striped Knit is a form-fitted knit fabric for the backrest of ID Soft. Its lightly textured surface and striped pattern add a fresh home-like accent to any office environment.

Striped Knit exists in a choice of two colour versions.

Material	4% spandex, 96% polyester
Weight	540 g/m <sup>2</sup> +/- 10%
Abrasion resistance	40,000 Martindale
Fastness to light	Type 6
Pilling	Grade 4-5
Fastness to rubbing	Grade 4-5 dry and wet



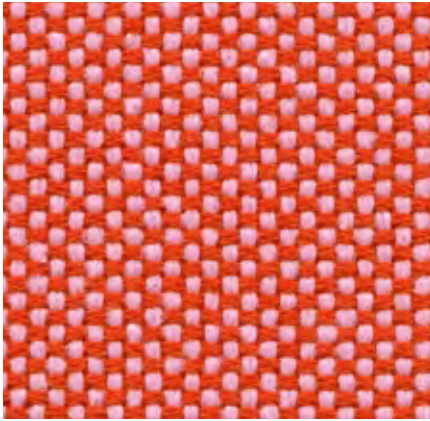
**01**  
brick/  
orange



**02**  
ink blue/  
turquoise

# Laser Home/Office, F40

ID Cloud (seat only), ID Air (seat only), ID Mesh (seat only), ID Soft, ID Soft L, ID Trim, ID Trim L



With its distinctive woven structure, Laser makes a robust and striking cover fabric. The varied palette offers a wide selection of colours, with the duotones showing off the woven structure to even greater advantage. Practical and easy to care for, as well as durable and highly abrasion-resistant, Laser is also well suited for office environments.

Laser is available in 35 colours.

Material	100% polyester Trevira CS
Weight	520 g/m <sup>2</sup> (15.3 oz/y <sup>2</sup> )
Width	145 cm +/- 2 cm (57")
Abrasion resistance	40,000 Martindale
Fastness to light	Type 6
Pilling	Grade 4-5
Fastness to rubbing	Grade 4-5 dry and wet



# Plano Home/Office, F30

**vitra.**

ID Cloud (seat only), ID Air (seat only), ID Mesh (seat only), ID Soft, ID Soft L, ID Trim, ID Trim L



Plano is a robust plain weave with a flat, even texture. The wide palette of duotones with new, delicate washed-out shades includes many relatively neutral hues, a good number of which are coordinated with the Hopsak colour range. Thanks to its durability and longevity, Plano is also an ideal choice for office furnishings.

Plano is available in 39 colours.

Material	100% polyester
Weight	265 g/m <sup>2</sup> (7.8 oz/y <sup>2</sup> )
Width	142 cm +/- 2 cm (56")
Abrasion resistance	80,000 Martindale
Fastness to light	Type 6
Pilling	Grade 4-5
Fastness to rubbing	Grade 4-5 dry and wet



# Reflect Home/Office, F40

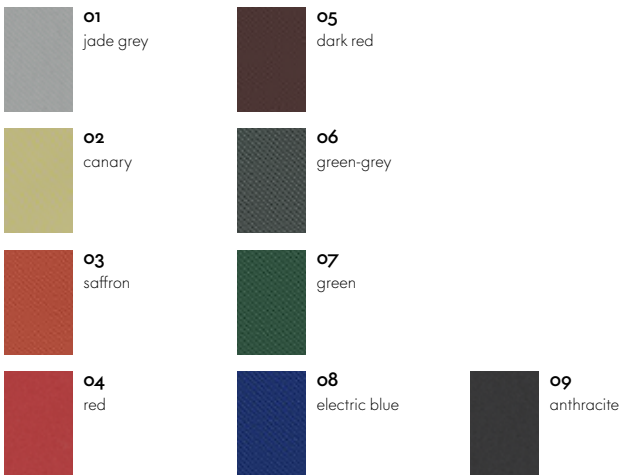
ID Cloud (seat only), ID Air (seat only), ID Mesh (seat only), ID Soft, ID Soft L, ID Trim, ID Trim L



Reflect is a sustainable fabric made of recycled polyester. Its twill weave offers a fine surface texture that is soft to the touch. As a highly robust material, Reflect meets the stringent requirements for use in public spaces.

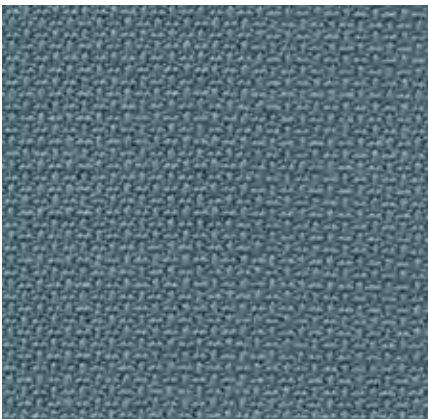
Hella Jongerius has designed nine colours, which are harmoniously coordinated with the Vitra Colour & Material Library. The Kvadrat palette extends the selection by a further 35 hues. Slight variations in colour may occur.

Material	100% recycled polyester
Weight	310 g/m <sup>2</sup>
Width	142 cm +/- 2 cm
Abrasion resistance	100,000 Martindale
Fastness to light	Type 6
Pilling	Grade 4-5
Fastness to rubbing	Grade 4-5 dry and wet



# Volo Home/Office, F60

ID Cloud (seat only), ID Air (seat only), ID Mesh (seat only), ID Soft, ID Soft L, ID Trim, ID Trim L



Volo is a finely structured wool blend with a refined weave that gives it an elegant appearance. This expressive textile shows strong solid colours to full advantage while simultaneously offering pleasant tactile qualities. With its soft look and appealing texture, Volo is a perfect fit for home interiors, but it is also well suited for use in the contract sector.

Volo is available in 17 colours.

Material	15% polyamide, 85% new wool
Weight	435 g/m <sup>2</sup> (12.8 oz/y <sup>2</sup> )
Width	145 cm +/- 3 cm (57")
Abrasion resistance	100,000 Martindale
Fastness to light	Type 6
Pilling	Grade 4-5
Fastness to rubbing	Grade 4-5 dry and wet



# Leather Home/Office, L20

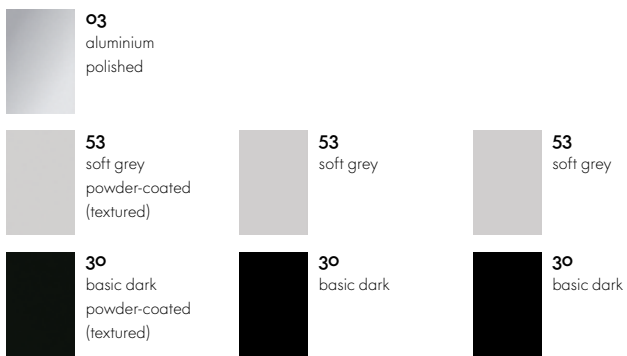
ID Trim, ID Trim L



The standard grade leather used by Vitra is a robust cowhide leather, dyed-through, pigmented and embossed with an even grain pattern. Since it is hard-wearing and easy to maintain, it can also be used in office environments.

Leather is available in 16 colours.

Material	Robust cowhide with a distinctive, even grain
Fastness to light	Type 6
Thickness	1.1–1.3 mm
Fastness to rubbing	Grade 4 dry and wet



**Base**

**Backrest colour ID Air**

**Frame**





**Vitra Test Centre**

All Vitra office chairs are subjected to rigorous testing, based on the parameters of 15 years of use, at the company's own Test Centre. Vitra carries out tests that go far beyond standard requirements, with an

inspection catalogue comprised of the world's toughest tests (simulation of worst-case usage).

Over the years, Vitra has developed additional tests of its own that are not found in any official catalogue of standards.



**Greenguard**

The GREENGUARD label for indoor air quality (2001) recognises products that contribute to the creation of healthier indoor environments.



**GS**

With the GS seal for tested safety, a state-authorised inspection institute certifies the suitability and safety of the construction and monitors production at regular intervals.



**Ergonomics Approved**

The LGA certificate 'Ergonomics Approved' confirms the fulfilment of ergonomic requirements and testing criteria that exceed the minimum legal regulations for office swivel chairs.

**BIFMA**

**Bifma**

ID Chair fulfils the ANSI/BIFMA standard X5.1-2011, thus meeting the stringent safety requirements for the US market.

## SUSTAINABLE QUALITY



The construction of ID Chairs uses the smallest possible number of components, and its constituent materials are easy to separate for subsequent recycling.

The chairs are up to 95% recyclable and consist of up to 57% recycled materials. They have been awarded the 'Blue Angel' seal for low-emission upholstered furniture and GREENGUARD certification for indoor air quality.

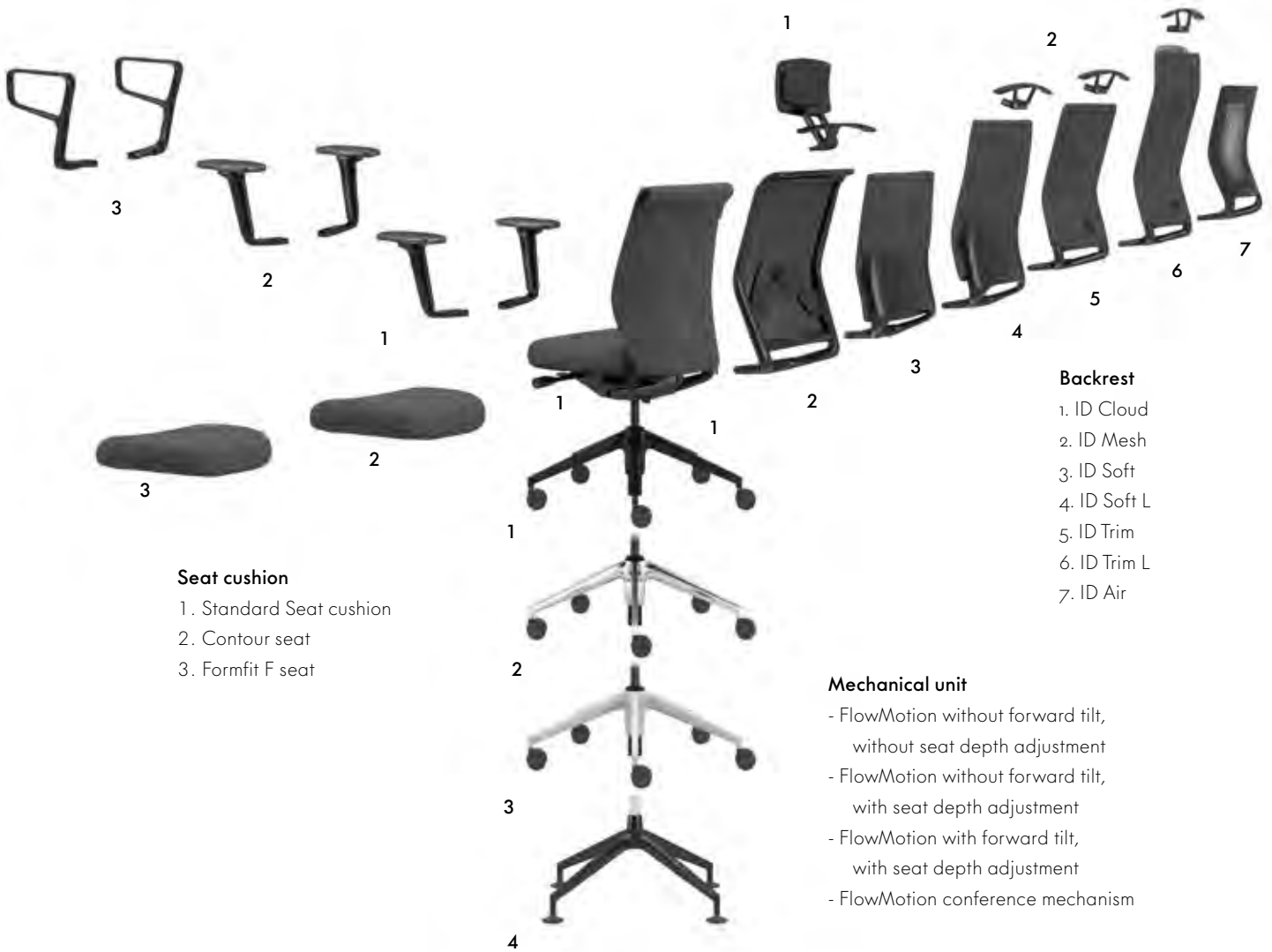
All ID Chairs share the same technical platform, which greatly facilitates maintenance and servicing. Parts subject to wear are simple to replace, the backrest and seat can be disassembled without the need for special tools, and the seat covers are easy to remove.

**Armrests**

- 1. 3D armrests F
- 2. 2D armrests F
- 3. Ring armrests

**Accessories**

- 1. Headrest and clothes hanger (ID Mesh)
- 2. Clothes hanger (ID Soft L, ID Trim, ID Trim L)



**Seat cushion**

- 1. Standard Seat cushion
- 2. Contour seat
- 3. Formfit F seat

**Backrest**

- 1. ID Cloud
- 2. ID Mesh
- 3. ID Soft
- 4. ID Soft L
- 5. ID Trim
- 6. ID Trim L
- 7. ID Air

**Mechanical unit**

- FlowMotion without forward tilt, without seat depth adjustment
- FlowMotion without forward tilt, with seat depth adjustment
- FlowMotion with forward tilt, with seat depth adjustment
- FlowMotion conference mechanism

**Bases**

- 1. Five-star base, plastic in basic dark
- 2. Five-star base, polished aluminium
- 3. Five-star base, coated aluminium
- 4. Four-star base, aluminium coated/polished

# ID Cloud

vitra.

Antonio Citterio, 2021



ID Cloud with ring armrests



ID Cloud with 2D armrests

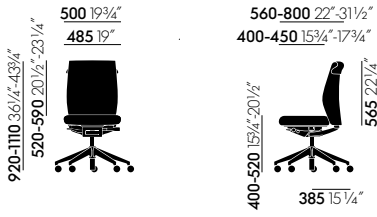


ID Cloud with 2D armrests

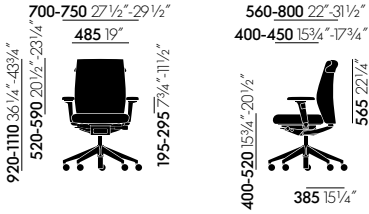
The innovative backrest construction of the office chair ID Cloud by Antonio Citterio provides a new sitting experience: the combination of an ergonomic shell and a breathable membrane adapts to the shape of the back and flexibly follows its movements. This offers users of any height or weight considerable freedom of movement.

## Materials

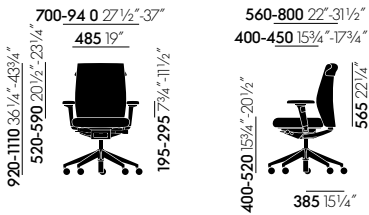
- **Office swivel chair with 2D or 3D armrests in accordance with EN 1335, Ergonomic Seal of Approval (LGA Nuremberg).**
- **Seat mechanism:** FlowMotion mechanism, lockable in upright sitting position. Seat mechanism matches the frame colour (basic dark or soft grey). Optionally with or without synchronous forward tilt (can be disabled) or seat depth adjustment. Individual adjustment of backrest resistance and forward tilt.
- **Backrest:** height-adjustable backrest with a three-part construction: frame in polyamide, membrane in TPE and knit cover. Back connection in basic dark or soft grey. Knit cover in Duo Knit.
- **Armrests:** 2D armrests with adjustable height and width or 3D armrests with adjustable height, width and depth and 360° swivel function. Armrest supports in aluminium, polished or powder-coated in the colours basic dark or soft grey (to match the frame colour). Armrest sleeves in polyamide are matched to the frame colour (basic dark or soft grey). With PU-foam-free (F) pads in basic dark (for frame colour basic dark) or dim grey (for frame colour soft grey). Optionally available with ring armrests for use in conference settings, made of die-cast aluminium, polished or powder-coated in basic dark or soft grey (to match the frame colour).
- **Seat:** polyurethane foam padding. Optional contour seat or PU-foam-free formfit (F) seat. Seat cover in woven fabric or 3D spacer fabric.
- **Base:** five-star base in polyamide (basic dark) or die-cast aluminium, polished or powder-coated in basic dark or soft grey (to match the frame colour), with double castors (Ø 60 mm) or glides.
- **Conference version:** conference chair (swivel) with four-star base made of die-cast aluminium, polished or powder-coated in basic dark or soft grey (to match frame colour) on glides in accordance with EN 16139. FlowMotion conference mechanism (no forward tilt, no seat depth adjustment) with individual adjustment of backrest resistance; fixed seat height with shock-absorbing seat suspension for added comfort.



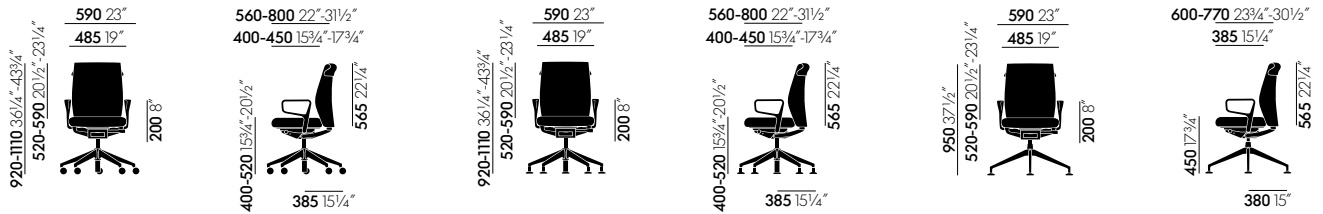
**ID Cloud without armrests**



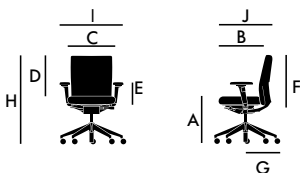
**ID Cloud with 2D armrests**



**ID Cloud with 3D armrests**



**ID Cloud with ring armrests**



**Explanation of measurements**

- A Seat height\*
- B Seat depth
- C Seat width
- D Top edge of backrest above seat surface\*
- E Armrest height above seat surface\*
- F Height of backrest (rear panel)
- G Maximum base radius
- H Total height
- I Width of upper part
- J Depth of upper part

\*measured with 64 kg load

# ID Air

vitra.

Antonio Citterio, 2012/2021



ID Air with 3D armrests



ID Air with 2D armrests



ID Air with fixed ring armrests

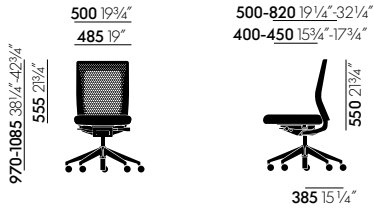
The one-piece plastic backrest of ID Air is an innovative construction manufactured in a patented process. The pattern of strategically placed perforations offers great freedom of movement while providing the necessary support for healthy sitting postures. The flexibility of the backrest and effective air circulation are complemented by a pleasantly upholstered seat to ensure a high degree of comfort.

## Materials

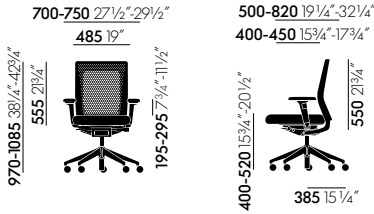
- **Office swivel chair with 2D or 3D armrests in accordance with EN 1335, Ergonomic Seal of Approval (LGA Nuremberg).**
- **Seat mechanism:** FlowMotion mechanism, lockable in upright sitting position. Seat mechanism matches the frame colour (basic dark or soft grey). Optionally with or without synchronous forward tilt (can be disabled) or seat depth adjustment. Individual adjustment of backrest resistance and forward tilt.

- **Backrest:** perforated plastic backrest in polypropylene (basic dark or soft grey).
- **Armrests:** 2D armrests with adjustable height and width or 3D armrests with adjustable height, width and depth and 360° swivel function. Armrest supports in aluminium, polished or powder-coated in the colours basic dark or soft grey (to match the frame colour). Armrest sleeves in polyamide are matched to the frame colour (basic dark or soft grey). With PU-foam-free (F) pads in basic dark (for frame colour basic dark) or dim grey (for frame colour soft grey). Optionally available with ring armrests for use in conference settings, made of die-cast aluminium, polished or powder-coated in basic dark or soft grey (to match the frame colour).
- **Seat:** polyurethane foam padding. Optional contour seat or PU-foam-free formfit (F) seat. Seat cover in woven fabric or 3D spacer fabric.

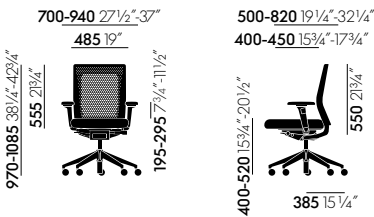
- **Base:** five-star base in polyamide (basic dark) or die-cast aluminium, polished or powder-coated in basic dark or soft grey (to match the frame colour), with double castors (Ø 60 mm) or glides.
- **Conference version:** conference chair (swivel) with four-star base made of die-cast aluminium, polished or powder-coated in basic dark or soft grey (to match frame colour) on glides in accordance with EN 16139. Flow-Motion conference mechanism (no forward tilt, no seat depth adjustment) with individual adjustment of backrest resistance; fixed seat height with shock-absorbing seat suspension for added comfort.



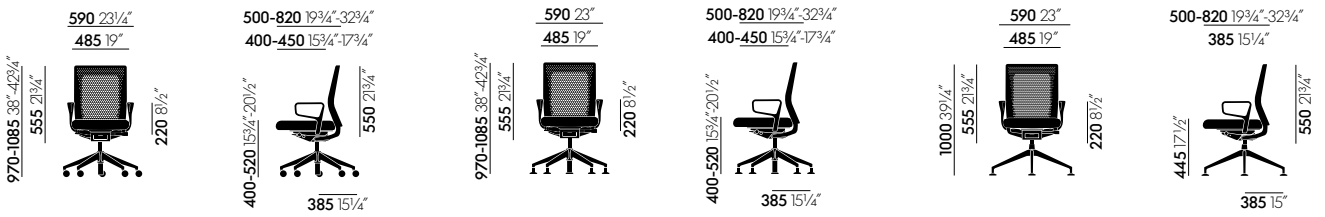
**ID Air without armrests**



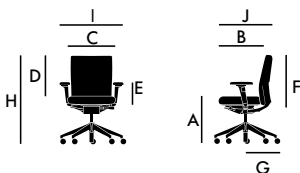
**ID Air with 2D armrests**



**ID Air with 3D armrests**



**ID Air with ring armrests**



**Explanation of measurements**

- A Seat height\*
- B Seat depth
- C Seat width
- D Top edge of backrest above seat surface\*
- E Armrest height above seat surface\*
- F Height of backrest (rear panel)
- G Maximum base radius
- H Total height
- I Width of upper part
- J Depth of upper part

\*measured with 64 kg load

# ID Mesh

vitra.

Antonio Citterio, 2010/2021



ID Mesh with ring armrests



ID Mesh with 2D armrests



ID Mesh with 3D armrests and headrest

ID Mesh embodies technical transparency and lightness: fitted over a slender frame, the innovative spacer fabric has the translucent airiness of a net – yet it's as soft as a slim cushion. The Diamond Mesh cover allows air to circulate and offers sustained comfort even in warmer temperatures. ID Mesh can be optionally outfitted with a clothes hanger or headrest.

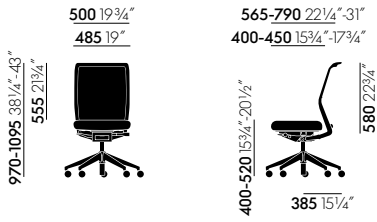
## Materials

- **Office swivel chair with 2D or 3D armrests in accordance with EN 1335, Ergonomic Seal of Approval (LGA Nuremberg). The version equipped with the FlowMotion mechanism with forward tilt and seat depth adjustment complies with BS 5459-2 (24-hour test).**
- **Seat mechanism:** FlowMotion mechanism, lockable in upright sitting position. Seat mechanism matches the frame colour (basic dark or soft grey). Optionally with or without synchronous forward tilt (can be disabled) or seat depth adjustment. Individual adjustment of backrest resistance and forward tilt.

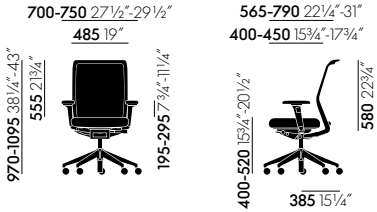
- **Backrest:** frame in polyamide (basic dark or soft grey). With height-adjustable lumbar support. Backrest cover in Diamond Mesh 3D spacer fabric (mesh look) or Silk Mesh (solid look). For Silk Mesh in the colour soft grey, the reverse side is in soft grey. For Silk Mesh in the colours nero and asphalt, the reverse side is in nero. For Silk Mesh in the colours olive green, smoke blue and dim grey, the reverse side matches the frame colour (soft grey or nero).
- **Armrests:** 2D armrests with adjustable height and width or 3D armrests with adjustable height, width and depth and 360° swivel function. Armrest supports in aluminium, polished or powder-coated in the colours basic dark or soft grey (to match the frame colour). Armrest sleeves in polyamide are matched to the frame colour (basic dark or soft grey). With PU-foam-free (F) pads in basic dark (for frame colour basic dark) or dim grey (for frame colour soft grey). Optionally available with ring armrests for use in conference settings, made of die-cast aluminium, polished or powder-coated in basic dark or soft grey (to match the frame colour).

- **Seat:** polyurethane foam padding. Optional contour seat or PU-foam-free formfit (F) seat. Seat cover in woven fabric or 3D spacer fabric.
- **Base:** five-star base in polyamide (basic dark) or die-cast aluminium, polished or powder-coated in basic dark or soft grey (to match the frame colour), with double castors (Ø 60 mm) or glides.
- **Accessories:** headrest in polyamide (basic dark or soft grey) with adjustable angle and height, retrofit option. With polyurethane pad in basic dark (for headrest in basic dark) or dim grey (for headrest in soft grey). Clothes hanger in polyamide (basic dark or soft grey), retrofit option (max. weight load: 2 kg). Headrest and clothes hanger can be used separately or combined.
- **Conference version:** conference chair (swivel) with four-star base made of die-cast aluminium, polished or powder-coated in basic dark or soft grey (to match frame colour) on glides in accordance with EN 16139. FlowMotion conference mechanism (no forward tilt, no seat depth adjustment) with individual adjustment of backrest resistance; fixed seat height with shock-absorbing seat suspension for added comfort.

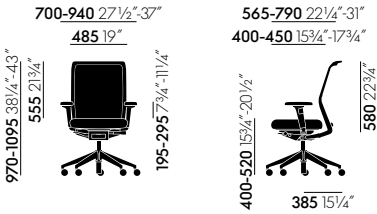




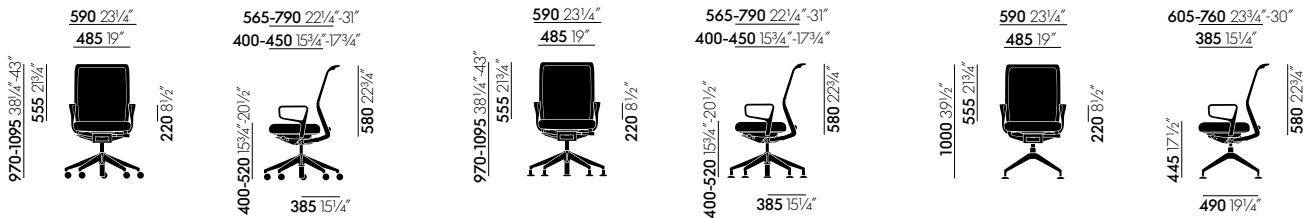
**ID Mesh without armrests**



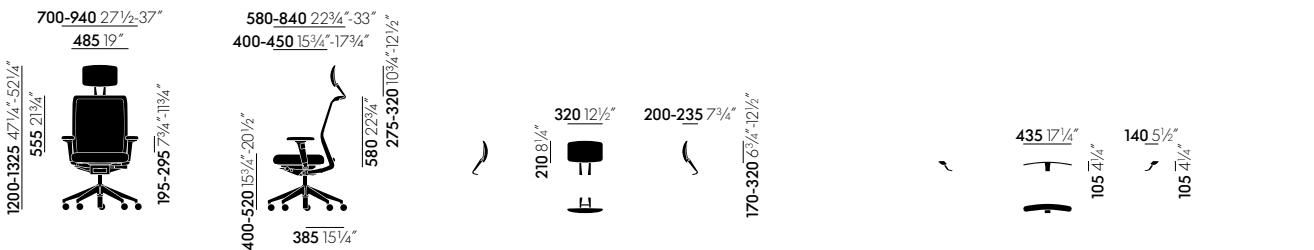
**ID Mesh with 2D armrests**



**ID Mesh with 3D armrests**



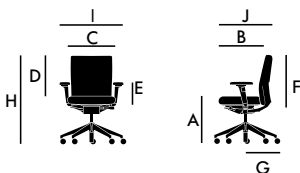
**ID Mesh with ring armrests**



**ID Mesh with 3D armrests and headrest**

**ID Mesh headrest**

**ID Mesh clothes hanger**



**Explanation of measurements**

- A Seat height\*
- B Seat depth
- C Seat width
- D Top edge of backrest above seat surface\*
- E Armrest height above seat surface\*
- F Height of backrest (rear panel)
- G Maximum base radius
- H Total height
- I Width of upper part
- J Depth of upper part

\*measured with 64 kg load

# ID Soft

vitra.

Antonio Citterio, 2010/2021



ID Soft with 3D armrests



ID Soft with 3D armrests and in Striped Knit



ID Soft with 2D armrests

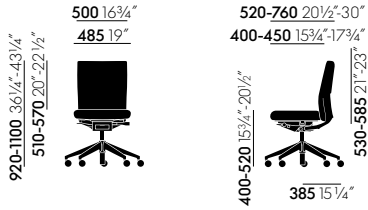
The fully upholstered backrest of ID Soft ensures a high level of comfort, while its clean lines and reductive forms lend the chair an understated presence. ID Soft therefore blends in perfectly with diverse architectural environments. Thanks to its height-adjustable backrest, ID Soft provides adequate support in the upper shoulder region for even very tall users.

## Materials

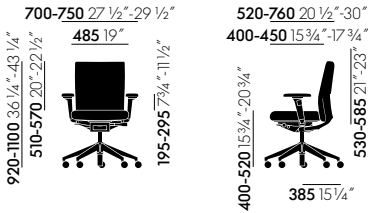
- **Office swivel chair with 2D or 3D armrests in accordance with EN 1335, Ergonomic Seal of Approval (LGA Nuremberg). The version equipped with the FlowMotion mechanism with forward tilt and seat depth adjustment complies with BS 5459-2 (24-hour test).**
- **Seat mechanism:** FlowMotion mechanism, lockable in upright sitting position. Seat mechanism matches the frame colour (basic dark or soft grey). Optionally with or without synchronous forward tilt (can be disabled) or seat depth adjustment. Individual adjustment of backrest resistance and forward tilt.
- **Backrest:** height-adjustable backrest in polyamide (basic dark or soft grey) with padded cushion in polyurethane foam. Cover in fabric, in Striped Knit or in 3D spacer fabric.
- **Armrests:** 2D armrests with adjustable height and width or 3D armrests with adjustable height, width and depth and 360° swivel function. Armrest supports in aluminium, polished or powder-coated in the colours basic dark or soft grey (to match the frame colour). Armrest sleeves in polyamide are matched to the frame colour (basic dark or soft grey).

With PU-foam-free (F) pads in basic dark (for frame colour basic dark) or dim grey (for frame colour soft grey). Optionally available with ring armrests for use in conference settings, made of die-cast aluminium, polished or powder-coated in basic dark or soft grey (to match the frame colour).

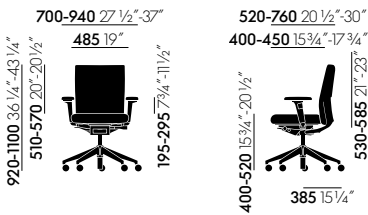
- **Seat:** polyurethane foam padding. Optionally available with contoured seat. Seat cover in woven fabric or 3D spacer fabric.
- **Base:** five-star base in polyamide (basic dark) or die-cast aluminium, polished or powder-coated in basic dark or soft grey (to match the frame colour), with double castors (Ø 60 mm) or glides.
- **Conference version:** conference chair (swivel) with four-star base made of die-cast aluminium, polished or powder-coated in basic dark or soft grey (to match frame colour) on glides in accordance with EN 16139. FlowMotion conference mechanism (no forward tilt, no seat depth adjustment) with individual adjustment of backrest resistance; fixed seat height with shock-absorbing seat suspension for added comfort.



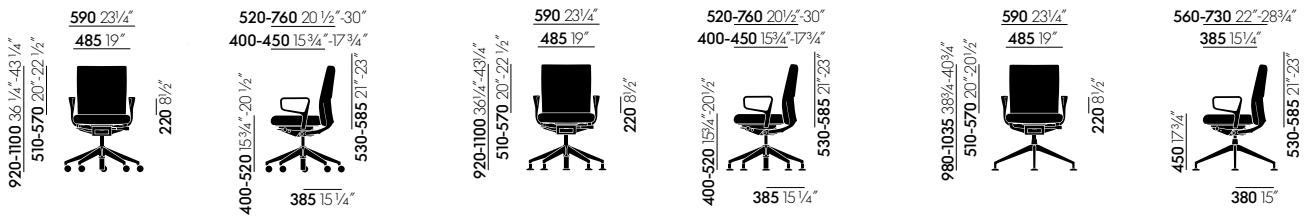
**ID Soft without armrests**



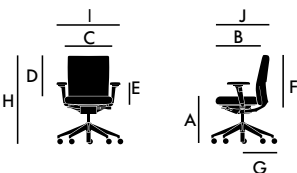
**ID Soft with 2D armrests**



**ID Soft with ring armrests**



**ID Soft with ring armrests**



**Explanation of measurements**

- A Seat height\*
- B Seat depth
- C Seat width
- D Top edge of backrest above seat surface\*
- E Armrest height above seat surface\*
- F Height of backrest (rear panel)
- G Maximum base radius
- H Total height
- I Width of upper part
- J Depth of upper part

\*measured with 64 kg load

# ID Soft L

vitra.

Antonio Citterio, 2016/2021



ID Soft L with ring armrests



ID Soft L with 3D armrests

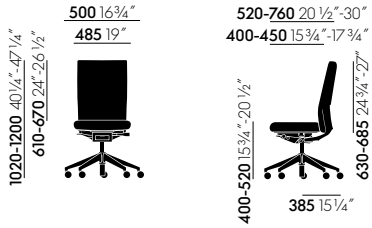


ID Soft L with 2D armrests and clothes hanger

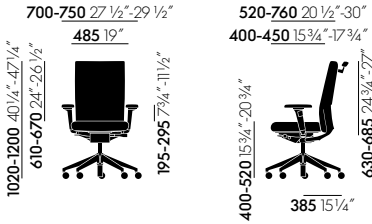
The high backrest of ID Soft L comes with padded upholstery for excellent comfort. Although the chair exudes elegant sophistication, its sleek lines and minimal design also lend it an understated character. ID Soft L can be harmoniously combined with other chairs and is a perfect addition to many different settings.

## Materials

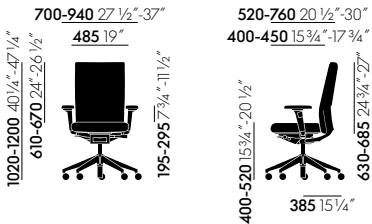
- **Office swivel chair with 2D or 3D armrests in accordance with EN 1335, Ergonomic Seal of Approval (LGA Nuremberg).**
- **Seat mechanism:** FlowMotion mechanism, lockable in upright sitting position. Seat mechanism matches the frame colour (basic dark or soft grey). Optionally with or without synchronous forward tilt (can be disabled) or seat depth adjustment. Individual adjustment of backrest resistance and forward tilt.
- **Backrest:** height-adjustable high backrest in polyamide (basic dark or soft grey) with padded cushion in polyurethane foam. Seat cover in woven fabric or 3D spacer fabric.
- **Armrests:** 2D armrests with adjustable height and width or 3D armrests with adjustable height, width and depth and 360° swivel function. Armrest supports in aluminium, polished or powder-coated in the colours basic dark or soft grey (to match the frame colour). Armrest sleeves in polyamide are matched to the frame colour (basic dark or soft grey). With PU-foam-free (F) pads in basic dark (for frame colour basic dark) or dim grey (for frame colour soft grey). Optionally available with ring armrests for use in conference settings, made of die-cast aluminium, polished or powder-coated in basic dark or soft grey (to match the frame colour).
- **Seat:** polyurethane foam padding. Optionally available with contoured seat. Seat and back covers in woven fabric or 3D spacer fabric.
- **Base:** five-star base in polyamide (basic dark) or die-cast aluminium, polished or powder-coated in basic dark or soft grey (to match the frame colour), with double castors (Ø 60 mm) or glides.
- **Accessories:** clothes hanger in polyamide (basic dark or soft grey), max. weight load: 2 kg.
- **Conference version:** conference chair (swivel) with four-star base made of die-cast aluminium, polished or powder-coated in basic dark or soft grey (to match frame colour) on glides in accordance with EN 16139. FlowMotion conference mechanism (no forward tilt, no seat depth adjustment) with individual adjustment of backrest resistance; fixed seat height with shock-absorbing seat suspension for added comfort.



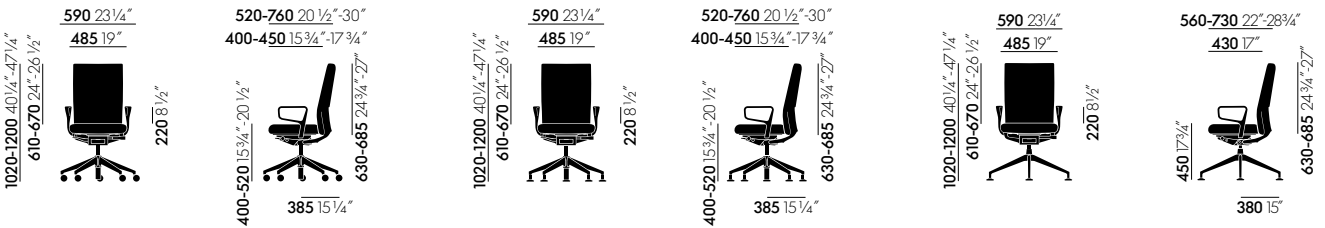
**ID Soft L without armrests**



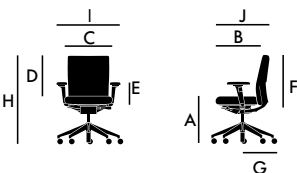
**ID Soft L with 2D armrests and clothes hanger**



**ID Soft L with 3D armrests**



**ID Soft L with ring armrests**



**Explanation of measurements**

- A** Seat height\*
- B** Seat depth
- C** Seat width
- D** Top edge of backrest above seat surface\*
- E** Armrest height above seat surface\*
- F** Height of backrest (rear panel)
- G** Maximum base radius
- H** Total height
- I** Width of upper part
- J** Depth of upper part

\*measured with 64 kg load

# ID Trim

vitra.

Antonio Citterio, 2010/2021



ID Trim with 3D armrests



ID Trim with ring armrests

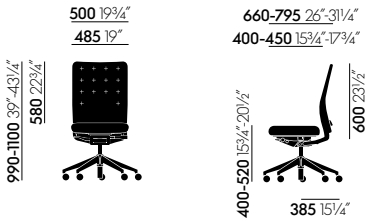


ID Trim with 2D armrests

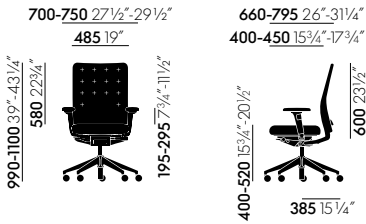
With its compact padding, the backrest of ID Trim conveys a sense of classic elegance and quality craftsmanship. The sandwich construction with integrated lumbar support provides the comfort of an upholstered backrest while being almost as slim as a mesh backrest – offering an alternative to both of these construction types.

## Materials

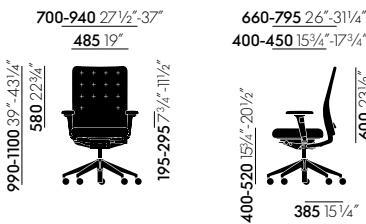
- **Office swivel chair with 2D or 3D armrests in accordance with EN 1335, Ergonomic Seal of Approval (LGA Nuremberg). The version equipped with the FlowMotion mechanism with forward tilt and seat depth adjustment complies with BS 5459-2 (24-hour test).**
- **Seat mechanism:** FlowMotion mechanism, lockable in upright sitting position. Seat mechanism matches the frame colour (basic dark or soft grey). Optionally with or without synchronous forward tilt (can be disabled) or seat depth adjustment. Individual adjustment of backrest resistance and forward tilt.
- **Backrest:** frame in polyamide (basic dark or soft grey). Optional height-adjustable lumbar cushion. Cover in fabric or leather.
- **Armrests:** 2D armrests with adjustable height and width or 3D armrests with adjustable height, width and depth and 360° swivel function. Armrest supports in aluminium, polished or powder-coated in the colours basic dark or soft grey (to match the frame colour). Armrest sleeves in polyamide are matched to the frame colour (basic dark or soft grey). With PU-foam-free (F) pads in basic dark (for frame colour basic dark) or dim grey (for frame colour soft grey). Optionally available with ring armrests for use in conference settings, made of die-cast aluminium, polished or powder-coated in basic dark or soft grey (to match the frame colour).
- **Seat:** polyurethane foam padding. Optionally available with contoured seat. Seat and back covers in fabric or leather. Leather covers are not recommended for chairs with forward tilt, since a leather surface might cause users to slide off the seat.
- **Base:** five-star base in polyamide (basic dark) or die-cast aluminium, polished or powder-coated in basic dark or soft grey (to match the frame colour), with double castors (Ø 60 mm) or glides.
- **Accessories:** clothes hanger in polyamide (basic dark or soft grey), max. weight load: 2 kg.
- **Conference version:** conference chair (swivel) with four-star base made of die-cast aluminium, polished or powder-coated in basic dark or soft grey (to match frame colour) on glides in accordance with EN 16139. FlowMotion conference mechanism (no forward tilt, no seat depth adjustment) with individual adjustment of backrest resistance; fixed seat height with shock-absorbing seat suspension for added comfort.



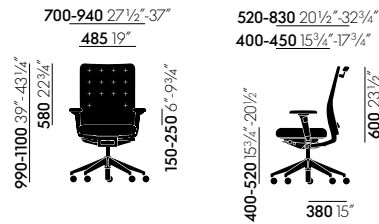
**ID Trim without armrests**



**ID Trim with 2D armrests**



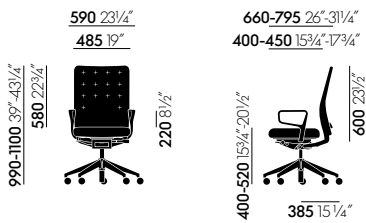
**ID Trim with 3D armrests**



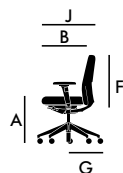
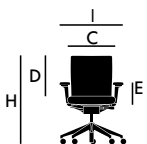
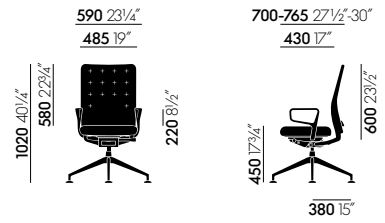
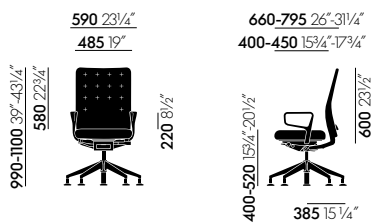
**ID Trim with 3D armrests and clothes hanger**



**ID Trim clothes hanger**



**ID Trim with ring armrests**



**Explanation of measurements**

- A Seat height\*
- B Seat depth
- C Seat width

- D Top edge of backrest above seat surface\*
- E Armrest height above seat surface\*

- F Height of backrest (rear panel)
- G Maximum base radius
- H Total height

- I Width of upper part
- J Depth of upper part

\*measured with 64 kg load

# ID Trim L

vitra.

Antonio Citterio, 2010/2021



ID Trim L with 3D armrests and clothes hanger



ID Trim L with ring armrests



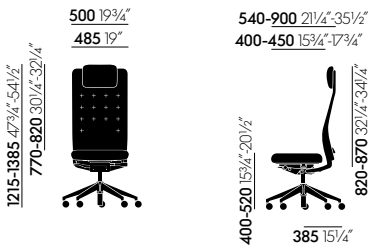
ID Trim L with ring armrests

With its compact padding, the backrest of ID Trim conveys a sense of classic elegance and quality craftsmanship. The sandwich construction with integrated lumbar support provides the comfort of an upholstered backrest while being almost as slim as a mesh backrest – offering an alternative to both of these construction types. ID Trim L is an excellent choice for the executive office due to its high backrest, which offers extra relief from tension in the head and neck.

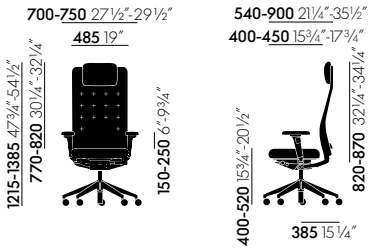
## Materials

- **Office swivel chair with 2D or 3D armrests in accordance with EN 1335, Ergonomic Seal of Approval (LGA Nuremberg). The version equipped with the FlowMotion mechanism with forward tilt and seat depth adjustment complies with BS 5459-2 (24-hour test).**
- **Seat mechanism:** FlowMotion mechanism, lockable in upright sitting position. Seat mechanism matches the frame colour (basic dark or soft grey). Optionally with or without synchronous forward tilt (can be disabled) or seat depth adjustment. Individual adjustment of backrest resistance and forward tilt.
- **Backrest:** high backrest with integrated, height-adjustable headrest. Backrest frame in polyamide (basic dark or soft grey). Optional height-adjustable lumbar cushion. Cover in fabric or leather. Headrest for leather upholstery in the corresponding leather colour; for fabric upholstery, headrest covered in dim grey leather or nero leather.
- **Armrests:** 2D armrests with adjustable height and width or 3D armrests with adjustable height, width and depth and 360° swivel function. Armrest supports in aluminium, polished or powder-coated in the colours basic dark or soft grey (to match the frame colour). Armrest sleeves in polyamide are matched to the frame colour (basic dark or soft grey). With PU-foam-free (F) pads in basic dark (for frame colour basic dark) or dim grey (for frame colour soft grey). Optionally available with ring armrests for use in conference settings, made of die-cast aluminium, polished or powder-coated in basic dark or soft grey (to match the frame colour).
- **Seat:** polyurethane foam padding. Optionally available with contoured seat. Seat and back covers in fabric or leather. Leather covers are not recommended for chairs with forward tilt, since a leather surface might cause users to slide off the seat.
- **Base:** five-star base in polyamide (basic dark) or die-cast aluminium, polished or powder-coated in basic dark or soft grey (to match the frame colour), with double castors (Ø 60 mm) or glides.
- **Accessories:** clothes hanger in polyamide (basic dark or soft grey), max. weight load: 2 kg.
- **Conference version:** conference chair (swivel) with four-star base made of die-cast aluminium, polished or powder-coated in basic dark or soft grey (to match frame colour) on glides in accordance with EN 16139. FlowMotion conference mechanism (no forward tilt, no seat depth adjustment) with individual adjustment of backrest resistance; fixed seat height with shock-absorbing seat suspension for added comfort.

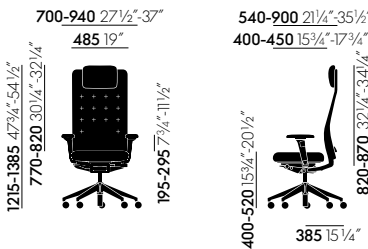




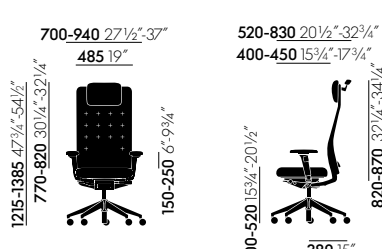
**ID Trim L without armrests**



**ID Trim L, 2D armrest**



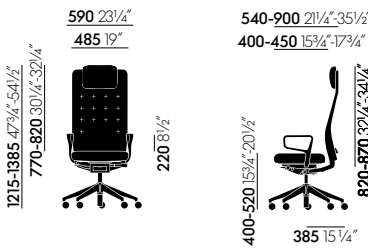
**ID Trim L with 3D armrests**



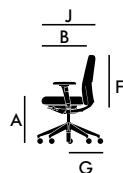
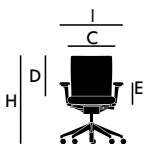
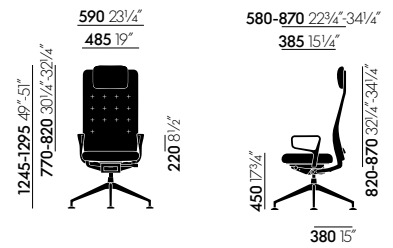
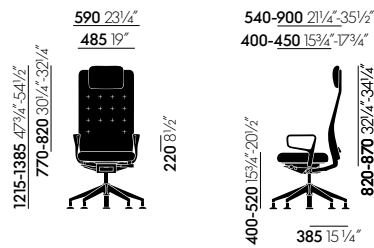
**ID Trim L with 3D armrests and clothes hanger**



**ID Trim clothes hanger**



**ID Trim L with ring armrests**



**Explanation of measurements**

- A Seat height\*
- B Seat depth
- C Seat width

- D Top edge of backrest above seat surface\*
- E Armrest height above seat surface\*

- F Height of backrest (rear panel)
- G Maximum base radius
- H Total height

- I Width of upper part
- J Depth of upper part

\*measured with 64 kg load